

# TRI-STAND CHAIN VICE

---



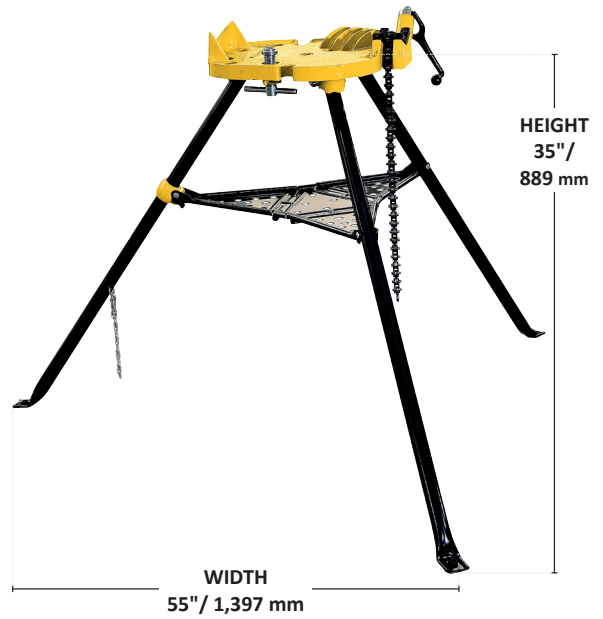
**PRODUCT BROCHURE**

The B&B SUMNER Tri-Stand Chain Vice is a rugged and portable pipe-holding solution designed for heavy-duty field and workshop use. Built with a sturdy tripod base, this vise provides excellent stability on uneven surfaces, making it an ideal choice for plumbers, pipefitters, and industrial maintenance teams working in both on-site and fabrication settings.

Featuring a durable cast iron vice head mounted on a collapsible steel stand, the Tri-Stand chain vice uses a chain clamp mechanism to secure pipes of varying diameters with firm, even pressure. The adjustable chain wraps around the pipe and tightens using a screw-action handle, accommodating round pipes and irregular profiles while minimizing the risk of slippage or deformation.

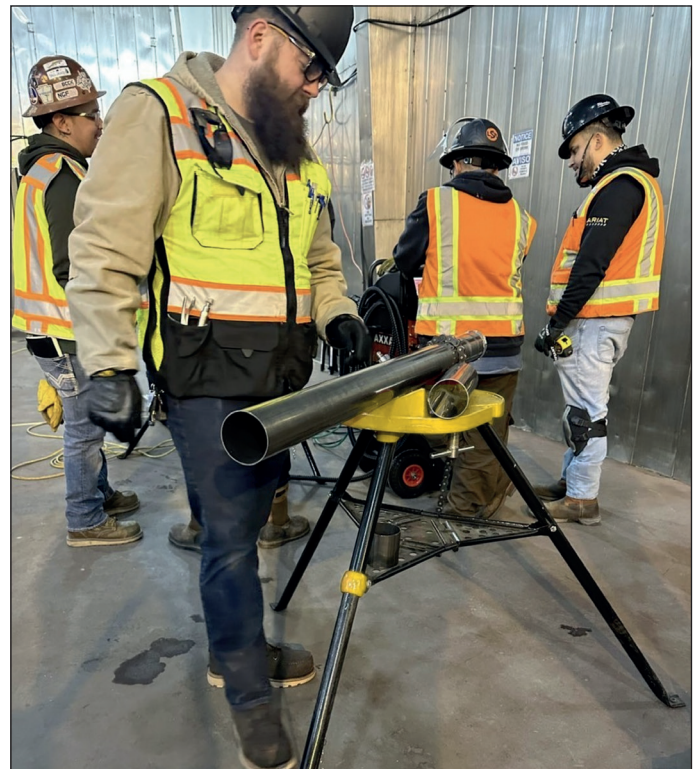
The vice typically handles pipe sizes from 0.125 - 6" / 3 - 152 mm, and its integral tool tray enhances productivity by keeping fittings, threading oil, or tools within reach. Hardened tool-steel jaws bite firmly into pipe surfaces for enhanced grip, even under torque-heavy operations like threading or cutting.

Its foldable legs, ergonomic carry handle, and compact footprint make it easy to transport and store, while the steel tripod base ensures secure footing in various work environments, including construction sites, mechanical rooms, and workshops. The Tri-Stand Chain Vice is an indispensable asset for professionals demanding reliability, portability, and robust pipe support in demanding work conditions.



## SPECIFICATIONS

- Durable cast aluminium head balances light weight and durability.
- Heavy duty hold down tightening device with replaceable jaw.
- Folding legs with chain lock.
- Leg bracing doubles as a lipped shelf for holding additional tooling and machines.
- Up to 6" pipe capacity
- Boxed and fully assembled, ready for immediate use (box dimensions: 46 x 18 x 16" / 1,168.4 x 457.2 x 406.4 mm)
- Heavy duty jaws
- 55" width x 35" height / 1,397 x 889 mm (working dimensions)
- 1,000 lbs / 450 kg capacity
- The Tri-Stand Chain Vice is individually available or in a (high) crate of 20 pieces (Part No. 6100x20).



NEW PART NO	OLD SUMNER PART NO	OLD BB PART NO	DESCRIPTION	LOAD CAPACITY	
6100	n/a	6100	Tri-stand chain vice	1,000 lbs	450 kg